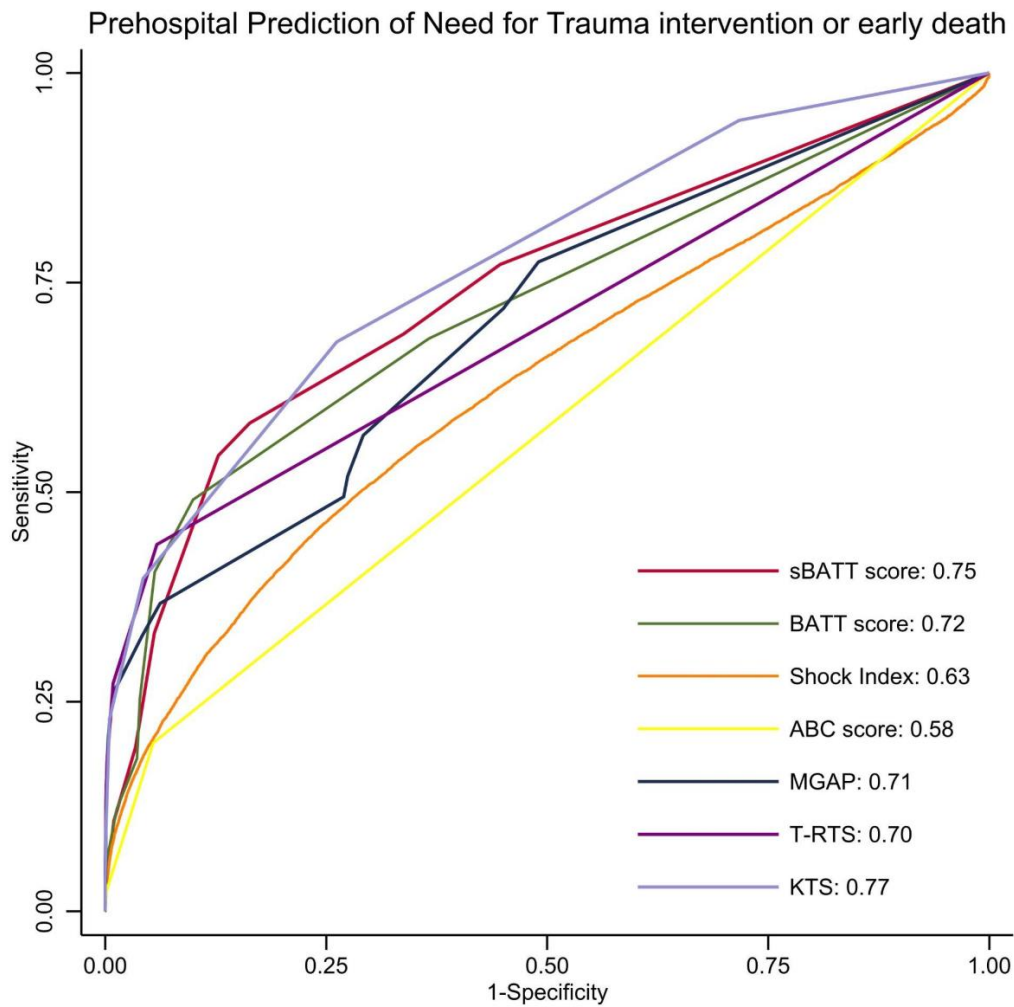


Supplemental Figure 1. Receiver Operating Characteristic curves for trauma scores predicting early death or need for trauma intervention



Supplemental Table 1. Discrimination of the different trauma scores by sex

	Women		Men	
	N=18,175		N=51,852	
	AUROC (95% CI)	Negative LR	AUROC (95% CI)	Negative LR
sBATT score (≥3)	0.89 (0.88-0.90)	0.09	0.90 (0.90-0.91)	0.05
BATT score (≥3)	0.90 (0.90-0.91)	0.04	0.91 (0.91-0.92)	0.03
Shock Index (≥0.9)	0.62 (0.59-0.65)	0.74	0.61 (0.59-0.63)	0.75
ABC score (≥2)	0.64 (0.62-0.66)	0.96	0.67 (0.65-0.68)	0.96
MGAP (< 23)	0.95 (0.94-0.95)	0.11	0.95 (0.94-0.95)	0.11
T-RTS (≤ 11)	0.91 (0.90-0.93)	0.13	0.93 (0.92-0.94)	0.11
KTS (≤ 13)	0.94 (0.93-0.95)	0.03	0.95 (0.94-0.95)	0.04

Supplemental Table 2. Discrimination of the sBATT score to predict primary and secondary outcomes.

	Early death	NFTI-Death	NFTI
sBATT (85 mmHg)			
AUROC	0.90 (0.90-0.91)	0.75 (0.74-0.75)	0.73 (0.73-0.74)
Sensitivity	96%	59%	58%
Specificity	72%	84%	83%
Negative likelihood ratio	0.06	0.49	0.51
sBATT (60 mmHg)			
AUROC	0.90 (0.89-0.90)	0.74 (0.74-0.75)	0.73 (0.72-0.73)
Sensitivity	95%	57%	56%
Specificity	73%	84%	83%
Negative likelihood ratio	0.07	0.51	0.53