

# BMJ Open In-hospital mortality and risk factors among elderly patients with traumatic brain injury: protocol for a systematic review and meta-analysis

Zixuan Ma,<sup>1</sup> Jiyuan Hui,<sup>1</sup> Chun Yang ,<sup>1</sup> Jiyao Jiang,<sup>1,2</sup> Li Xie ,<sup>3</sup> Junfeng Feng <sup>1,2</sup>

**To cite:** Ma Z, Hui J, Yang C, *et al.* In-hospital mortality and risk factors among elderly patients with traumatic brain injury: protocol for a systematic review and meta-analysis. *BMJ Open* 2023;**13**:e065371. doi:10.1136/bmjopen-2022-065371

► Prepublication history and additional supplemental material for this paper are available online. To view these files, please visit the journal online (<http://dx.doi.org/10.1136/bmjopen-2022-065371>).

ZM and JH contributed equally.

ZM and JH are joint first authors.

Received 02 June 2022

Accepted 06 March 2023



© Author(s) (or their employer(s)) 2023. Re-use permitted under CC BY-NC. No commercial re-use. See rights and permissions. Published by BMJ.

<sup>1</sup>Brain Injury Center, Shanghai Jiao Tong University School of Medicine Affiliated Renji Hospital, Shanghai, China  
<sup>2</sup>Shanghai Institute of Head Trauma, Shanghai, China  
<sup>3</sup>Clinical Research Institute, Shanghai Jiao Tong University, Shanghai, China

**Correspondence to**  
Professor Junfeng Feng;  
fengjfmail@163.com and  
Dr Li Xie; xielijenny@gmail.com

## ABSTRACT

**Introduction** The elderly population is more vulnerable to traumatic brain injury (TBI) compared with younger adults, and there is an increasing trend in TBI-related hospitalisations and deaths in the elderly due to the ageing global population. This is a thorough update to a previous meta-analysis on the mortality of elderly TBI patients. Our review will include more recent studies and provide a comprehensive analysis of risk factors.

**Methods and analysis** The protocol of our systematic review and meta-analysis is reported following the Preferred Reporting Items for Systematic Reviews and Meta-Analyses Protocols guidelines. We will search the following databases: PubMed, Cochrane Library and Embase from inception to 1 February 2023 reporting in-hospital mortality and/or risk factors predicting in-hospital mortality among elderly patients with TBI. We will perform a quantitative synthesis for in-hospital mortality data combined with meta-regression and subgroup analysis to determine whether there is a trend or source of heterogeneity. Pooled estimates for risk factors will be presented in the form of ORs and 95% CIs. Examples of risk factors include age, gender, cause of injury, severity of injury, neurosurgical intervention and preinjury antithrombotic therapy. Dose-response meta-analysis for age and risk of in-hospital mortality will be performed if sufficient studies are included. We will perform a narrative analysis if quantitative synthesis is not appropriate.

**Ethics and dissemination** Ethics approval is not required; we will publish findings from this study in a peer-reviewed journal and present results at national and international conferences. This study will promote a better understanding and management of elderly/geriatric TBI.

**PROSPERO registration number** CRD42022323231.

## INTRODUCTION

### Background

Traumatic brain injury (TBI) is a significant health burden and one of the leading causes of death worldwide.<sup>1–4</sup> It is estimated that there are 54–60 million new TBI cases every year globally,<sup>2 5</sup> and in Europe, every TBI death has been associated with an average of 24.3 years of life lost.<sup>6</sup>

## STRENGTHS AND LIMITATIONS OF THIS STUDY

- ⇒ This is the first study specifically designed to investigate risk factors associated with the outcome of geriatric traumatic brain injury.
- ⇒ The study will introduce various analysis methods such as meta-regression, subgroup analysis and dose-response meta-analysis.
- ⇒ We will use the Newcastle-Ottawa Scale to assess the risk of bias in the included studies.
- ⇒ One possible limitation could be the comprehensiveness in the analysis of all risk factors in the elderly traumatic brain injury population.

Population ageing has been a major health concern in high-income countries and continues to be a progressive issue in the rest of the world. According to the United Nations, the number of persons aged 65 years or over reached 703 million in 2019 and is expected to double to 1.5 billion by 2050, accounting for 16% of the global population.<sup>7</sup> As the largest developing country in the world, China has a population of 1.4 billion, including 191 million older adults according to the seventh National Census in 2020, however, the United Nations expects this number to reach 366 million by 2050, taking up 26.1% of the total population compared with 13.5% currently.<sup>7 8</sup>

Similarly, a trend is also observed in annual TBI-related hospitalisations and deaths with the number of elderly/geriatric patients increasing and the number of younger patients decreasing.<sup>9–12</sup> Meanwhile, elderly patients are more likely to suffer from TBI. Individuals aged 65 years or over represented 15.2% of the US population in 2017,<sup>13</sup> but they accounted for 43.9% of all TBI-related hospitalisations and 38.4% of all TBI-related deaths in the USA in 2017.<sup>14</sup>

The major cause of geriatric TBI is falls, followed by road traffic accidents.<sup>15–18</sup> Elderly

TBI patients tend to have a higher chance of mortality and poorer functional outcomes than younger patients.<sup>19–23</sup> Many factors have been reported to be associated with in-hospital mortality in geriatric TBI patients, including older age,<sup>16 18 24 25</sup> gender<sup>16 25 26</sup> and severity of injury.<sup>16 17 25</sup> Some factors remain debatable when it comes to their effects on outcomes of geriatric TBI, such as causes of injury,<sup>16 18 27</sup> neurosurgical intervention<sup>17 25 28</sup> and preinjury antithrombotic therapy.<sup>15 29 30</sup>

Previously, there have been several meta-analysis studies on geriatric TBI, with some describing short-term and long-term functional conditions.<sup>26 31 32</sup> One study compared the effect of two anticoagulants on geriatric patients with mTBI.<sup>33</sup> A meta-analysis published in 2013 examined 22 studies on mortality at 5 time points post-TBI, including 11 studies that focused on mortality at discharge.<sup>34</sup> With respect to this previous study by McIntyre *et al*, we will include a much larger number of recent studies, and introduce new analysis methods such as meta-regression and dose–response meta-analysis as updates that were not used in this previous meta-analysis. Furthermore, the main aim of our study will be to provide a comprehensive analysis of risk factors predicting in-hospital mortality.

## Objectives

This systematic review aims to examine the in-hospital mortality rate of TBI in elderly patients and to evaluate the risk factors predicting in-hospital mortality. We seek to answer the following questions:

1. What is the overall in-hospital mortality rate among elderly patients with TBI, and what is the in-hospital mortality rate when TBI is classified as mild (GCS 13–15), moderate (GCS 9–12), severe (GCS 3–8) or critical (GCS 3–5)?
2. Is there a trend in the in-hospital mortality rate over time or in different regions of the world?
3. What are the risk factors for in-hospital mortality among elderly patients with TBI, and to what extent can these predict the in-hospital mortality of our study population?

## METHODS

### Study registration

The protocol of our systematic review and meta-analysis is reported following the Preferred Reporting Items for Systematic Reviews and Meta-Analyses Protocols (PRISMA-P) statement guidelines.<sup>35</sup> This protocol was registered on the PROSPERO database (CRD42022323231) on 12 May 2022.

### Eligibility criteria

#### Types of studies

Retrospective or prospective cohort studies, case–control studies and cross-sectional studies will be included.

### Study population

This systematic review is focused on elderly patients with TBI. ‘Elderly’ was defined by the United Nations<sup>36</sup> and the WHO<sup>37</sup> as adults aged ≥60 years, it is also often defined elsewhere as ≥65 years.<sup>7</sup> To include more studies, we will use the more inclusive criterion of adults ≥50 years in our study screening process. Due to possible variations in disease diagnosis, the definition of ‘TBI’ will be extracted from included studies.

### Exposure

We will investigate risk factors reportedly associated with the in-hospital mortality of our study population, and we will assess to what extent these risk factors can predict our primary outcome. Specific examples of risk factors include age, gender, cause of injury, severity of injury, neurosurgical intervention, preinjury antithrombotic therapy, etc.

### Outcomes

The primary outcome is in-hospital mortality (mortality at any time point within 30 days is also considered in-hospital mortality). Additional outcomes are risk factors predicting main outcomes, which will be measured and analysed in the form of ORs.

### Search strategies

The searches will be conducted in the following three databases under the guidance of the Cochrane Handbook:<sup>38</sup> PubMed, Cochrane Library and Embase from inception to 1 February 2023. We will include studies published in English only. Table 1 presents the initial draft of the search strategy to be used for the PubMed database. The detailed search strategy for all three databases can be found in online supplemental material.

### Inclusion criteria

1. Studies that provide outcome information for elderly patients diagnosed with TBI.

**Table 1** Search strategy for PubMed

Search #	Search term
1	Brain trauma*[Title] or head injur*[Title] or brain injur*[Title] or head trauma*[Title] or Traumatic Encephalopath*[Title] or TBI[Title] or neurotrauma*[Title]
2	Age Factors[MeSH] or Old[Tiab] or Older[Tiab] OR geri* [Tiab] OR elder*[tiab] OR ageing[Tiab] or frail*[Tiab]
3	Outcome*[Tiab] OR Mortality[Tiab] OR surviv*[Tiab] OR prognos*[Tiab] OR death*[Tiab] OR Factor*[Tiab]
4	1 AND 2 AND 3
5	English[Language]
6	4 AND 5
7	Filter: before 1 February 2023

2. Studies that reported risk factors predicting the main outcome for elderly patients diagnosed with TBI.

### Exclusion criteria

1. Studies in languages other than English.
2. Studies that use a different outcome measure other than in-hospital mortality or mortality within 30 days, such as 6-month mortality or functional outcome.
3. Studies that only focused on one specific type of TBI, such as 'acute subdural haematoma'.
4. Studies that did not provide specific data for the elderly group or provided data that is hard to extract (eg, provided by line charts).
5. Studies with a small sample size (elderly group  $N < 100$  for overall mortality analysis, or  $N < 20$  for severity subgroup analysis).

The study screening process will be conducted by two independent investigators. The first round of screening will be conducted by reviewing the titles and abstracts of all studies obtained through database searches, to evaluate all studies that meet the inclusion criteria. The full-text articles and possible appendixes of available studies will then be reviewed to exclude studies that meet the exclusion criteria. The reasons for exclusion will be recorded. All discrepancies will be resolved by consultation with a third investigator.

For studies that share the same data source, we will only include the study with the larger sample size and longer study period in the mortality analysis, and the study containing more data on risk factors will be included in the analyses of risk factors.

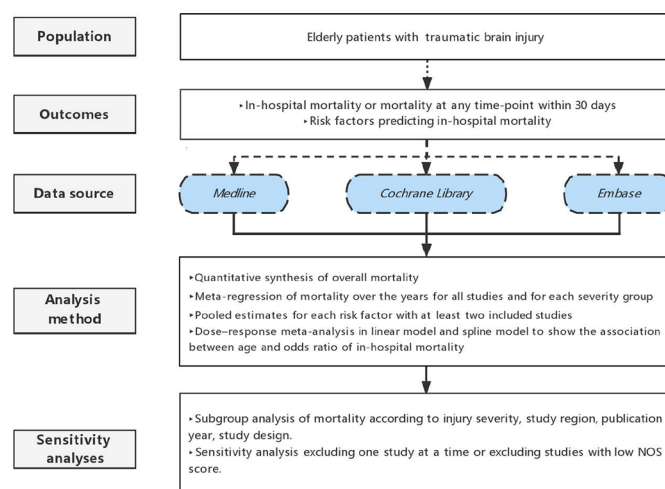
### Data extraction

Data extraction will be performed by two investigators and will include the following information: (1) author(s) of the study; (2) research time period and publication year; (3) study design; (4) country and continent of the study; (5) data source; (6) study population and inclusion criteria; (7) definition of 'elderly' and diagnostic criteria for 'TBI'; (8) main outcome; (9) number of patients included in the elderly group; (10) mortality observed in the elderly group; (11) risk factors predicting main outcomes (if reported) and (12) ORs and 95% CIs of the risk factors (data from multivariate regression analyses are preferred).

All disagreements will be resolved by consultation with a third investigator.

### Risk of bias and quality assessment

Risk of bias assessment of included studies will be performed by two investigators independently using the Newcastle-Ottawa Quality Assessment tool for cohort studies and case-control studies,<sup>39</sup> based on selection, comparability and outcome. A third investigator will be consulted should there be any disagreement. A rate of  $< 20\%$  lost to follow-up is considered as low risk of bias due to incomplete data. Publication bias will be assessed by the funnel plot, Egger's test and Begger's test for every



**Figure 1** Summary of the study design and main methodological aspects. NOS, Newcastle-Ottawa Scale.

synthesis of four studies or more. Sensitivity analysis will be performed for overall mortality by excluding one study at a time or excluding studies with low Newcastle-Ottawa Scale scores. A summary table of study characteristics will be presented, including the study population, study setup, study design and definitions of 'elderly' and 'TBI'.

### Strategy for data synthesis

The PRISMA flow chart will be used to present the selection process. Extracted data will be imported into Stata 17.0 (Stata, College Station, TX) for all analyses. For each of the studies included in the mortality analysis, extracted mortality rate values will be either reported by studies or calculated from accessible original data. Figure 1 summarises the study design and main methodological aspects of this study.

Between-study heterogeneity will be assessed using the  $I^2$  statistic, and heterogeneity of  $I^2 > 50\%$  will be considered significant.<sup>40</sup> For overall mortality synthesis, we will use a fixed-effect model, and a random-effects model if there is significant between-study heterogeneity. Subgroup analysis will be performed according to injury severity, study region, publication year and study design to determine the potential source of heterogeneity. Meta-regression will be used to assess the trend in mortality over time for all studies and for each severity group.

For risk factors analysis, we will categorise the risk factors predicting the main outcome reported, and if there are more than two eligible studies included for a certain risk factor, synthesis of effect size will be conducted using ORs and 95% CIs reported in these studies or calculated from original data. For the risk factor of age, we will compare the OR of the oldest age group (eg, 90+ years) to that of the youngest age group (eg, 60–69 years). In addition, if there are more than five studies reporting in-hospital mortality rate data for at least three age groups, a dose-response meta-analysis will be conducted in a linear model and spline model to better show the association between age and risk of in-hospital mortality.<sup>41</sup>



We will perform a narrative analysis when quantitative synthesis is not appropriate.

### Grading the quality of evidence

The quality of evidence for all outcomes will be judged using the Grading of Recommendations Assessment, Development and Evaluation working group methodology. The quality of evidence will be assessed across the domains of risk of bias, consistency, directness, precision and publication bias. Additional domains may be considered where appropriate. Quality will be adjudicated as high, moderate, low or very low.

### Patient and public involvement

None

## DISCUSSION

Despite the health burden associated with geriatric TBIs, there are very few high-quality guidelines on the management of elderly TBI patients.<sup>42</sup> This area, therefore, demands more attention and study. With the results of our systematic review and meta-analysis, we will be able to understand the current situation, time-related or region-related trend of geriatric TBI on a large scale.

In the first part of our work, we will reexamine the pooled in-hospital mortality rate of elderly TBI patients, as an update and expand to the previous meta-analysis.<sup>31</sup> We will include much more studies published recently through our comprehensive search, and introduce new analysis methods such as meta-regression and subgroup analysis.

The main strength of our study lies in the comprehensive analysis of risk factors and our methodology approaches. We will provide quantified analysis and narrative analysis to identify all the risk factors, and introduce dose–response analysis to show the risk of older age. This has not been conducted by any other meta-analysis, which could strengthen our knowledge of some well-established risk factors, and determine the effect of some previously debatable factors. This part of our work can help identify the high-risk groups among geriatric TBI patients, and provide evidence or direction for developing a prognosis model. The final purpose is the targeted allocation of medical resources to the most beneficial patients.

One of the main possible limitations of our systematic review and meta-analysis could be the scarcity of studies and data on some of the risk factors in the elderly TBI population, for most of the studies focusing on patients of all ages, and our conclusion on these risk factors could be biased by the small sample size.

We hope that our study can answer some important clinical questions and provide useful information for clinicians, researchers, policy makers and eventually promote better understanding and management of geriatric TBI.

As a summary of the highlight, this study will provide comprehensive quantified analysis and narrative analysis to identify in-hospital mortality and the risk factors

of geriatric TBI, and introduce dose–response analysis to show the risk of older age.

## ETHICS AND DISSEMINATION

Ethics approval is not required. We will publish findings from this study in a peer-reviewed journal and present results at national and international conferences.

**Contributors** JF is the guarantor. JH developed the search strategy. CY developed the risk of bias assessment strategy. ZM drafted the manuscript. LX, JF and JJ helped to revise the manuscript. LX provided statistical expertise and developed the meta-analytic strategy. All authors read and approved the final manuscript.

**Funding** This study is funded by the Program of Shanghai Academic/Technology Research Leader (21XD1422400) and the Project of Shanghai Medical And Health Development Foundation (20224Z0012).

**Competing interests** None declared.

**Patient and public involvement** Patients and/or the public were not involved in the design, or conduct, or reporting, or dissemination plans of this research.

**Patient consent for publication** Not applicable.

**Provenance and peer review** Not commissioned; externally peer reviewed.

**Supplemental material** This content has been supplied by the author(s). It has not been vetted by BMJ Publishing Group Limited (BMJ) and may not have been peer-reviewed. Any opinions or recommendations discussed are solely those of the author(s) and are not endorsed by BMJ. BMJ disclaims all liability and responsibility arising from any reliance placed on the content. Where the content includes any translated material, BMJ does not warrant the accuracy and reliability of the translations (including but not limited to local regulations, clinical guidelines, terminology, drug names and drug dosages), and is not responsible for any error and/or omissions arising from translation and adaptation or otherwise.

**Open access** This is an open access article distributed in accordance with the Creative Commons Attribution Non Commercial (CC BY-NC 4.0) license, which permits others to distribute, remix, adapt, build upon this work non-commercially, and license their derivative works on different terms, provided the original work is properly cited, appropriate credit is given, any changes made indicated, and the use is non-commercial. See: <http://creativecommons.org/licenses/by-nc/4.0/>.

### ORCID iDs

Chun Yang <http://orcid.org/0000-0002-8779-387X>

Li Xie <http://orcid.org/0000-0003-1892-2217>

Junfeng Feng <http://orcid.org/0000-0002-3243-3842>

## REFERENCES

- 1 Jiang J-Y, Gao G-Y, Feng J-F, *et al*. Traumatic brain injury in China. *Lancet Neurol* 2019;18:286–95.
- 2 Maas AIR, Menon DK, Adelson PD, *et al*. Traumatic brain injury: integrated approaches to improve prevention, clinical care, and research. *Lancet Neurol* 2017;16:987–1048.
- 3 Gao G, Wu X, Feng J, *et al*. Clinical characteristics and outcomes in patients with traumatic brain injury in china: a prospective, multicentre, longitudinal, observational study. *Lancet Neurol* 2020;19:670–7.
- 4 Steyerberg EW, Wieggers E, Sewalt C, *et al*. Case-mix, care pathways, and outcomes in patients with traumatic brain injury in CENTER-TBI: a European prospective, multicentre, longitudinal, cohort study. *Lancet Neurol* 2019;18:923–34.
- 5 Feigin VL, Theadom A, Barker-Collo S, *et al*. Incidence of traumatic brain injury in New Zealand: a population-based study. *Lancet Neurol* 2013;12:53–64.
- 6 Majdan M, Plancikova D, Maas A, *et al*. Years of life lost due to traumatic brain injury in Europe: a cross-sectional analysis of 16 countries. *PLoS Med* 2017;14:e1002331.
- 7 United Nations, D.o.E.a.S.A., Population Division. World population ageing 2019 (ST/ESA/SER.A/444). 2020. Available: [www.un.org/en/development/desa/population/publications/pdf/ageing/WorldPopulationAgeing2019-Report.pdf](http://www.un.org/en/development/desa/population/publications/pdf/ageing/WorldPopulationAgeing2019-Report.pdf)

- 8 National Bureau of Statistics. *China statistical yearbook*. Beijing., C.S.P.H, 2021. Available: <http://www.stats.gov.cn/tjsj/ndsj/2021/indexeh.htm>
- 9 Peeters W, Majdan M, Brazinova A, *et al*. Changing epidemiological patterns in traumatic brain injury: a longitudinal hospital-based study in Belgium. *Neuroepidemiology* 2017;48:63–70.
- 10 Mauritz W, Brazinova A, Majdan M, *et al*. Deaths due to traumatic brain injury in Austria between 1980 and 2012. *Brain Inj* 2014;28:1096–101.
- 11 Van den Brand CL, Karger LB, Nijman STM, *et al*. Traumatic brain injury in the Netherlands, trends in emergency department visits, hospitalization and mortality between 1998 and 2012. *Eur J Emerg Med* 2018;25:355–61.
- 12 Fu TS, Jing R, McFaull SR, *et al*. Recent trends in hospitalization and in-hospital mortality associated with traumatic brain injury in Canada: a nationwide, population-based study. *J Trauma Acute Care Surg* 2015;79:449–54.
- 13 The Administration on Aging (AoA), A.f.C.L., U.S. Department of Health and Human Services. *A profile of older americans: 2017*. 2018.
- 14 Waltzman D, Haarbauer-Krupa J, Womack LS. Traumatic brain injury in older adults—a public health perspective. *JAMA Neurol* 2022;79:437–8.
- 15 Yang C, Lang L, He Z, *et al*. Epidemiological characteristics of older patients with traumatic brain injury in China. *J Neurotrauma* 2022;39:850–9.
- 16 Gwarzo IH, Perez-Patron M, Xu X, *et al*. Traumatic brain injury related hospitalizations: factors associated with in-hospital mortality among elderly patients hospitalized with a TBI. *Brain Inj* 2021;35:554–62.
- 17 Eom KS. Epidemiology and outcomes of traumatic brain injury in elderly population: a multicenter analysis using Korean neuro-trauma data bank system 2010–2014. *J Korean Neurosurg Soc* 2019;62:243–55.
- 18 Haring RS, Narang K, Canner JK, *et al*. Traumatic brain injury in the elderly: morbidity and mortality trends and risk factors. *J Surg Res* 2015;195:1–9.
- 19 Yamagami K, Kurogi R, Kurogi A, *et al*. The influence of age on the outcomes of traumatic brain injury: findings from a Japanese nationwide survey (J-ASPECT study-traumatic brain injury). *World Neurosurg* 2019;130:e26–46.
- 20 de Almeida CER, de Sousa Filho JL, Dourado JC, *et al*. Traumatic brain injury epidemiology in Brazil. *World Neurosurg* 2016;87:540–7.
- 21 Lagbas C, Bazargan-Hejazi S, Shaheen M, *et al*. Traumatic brain injury related hospitalization and mortality in California. *Biomed Res Int* 2013;2013:143092.
- 22 Mauritz W, Brazinova A, Majdan M, *et al*. Epidemiology of traumatic brain injury in Austria. *Wien Klin Wochenschr* 2014;126:42–52.
- 23 Ortiz-Prado E, Mascialino G, Paz C, *et al*. A nationwide study of incidence and mortality due to traumatic brain injury in Ecuador (2004–2016). *Neuroepidemiology* 2020;54:33–44.
- 24 Bae S, Song SW, Kim WJ, *et al*. Traumatic brain injury in patients aged  $\geq 65$  years versus patients aged  $\geq 80$  years: a multicenter prospective study of mortality and medical resource utilization. *Clin Exp Emerg Med* 2021;8:94–102.
- 25 Hosomi S, Sobue T, Kitamura T, *et al*. Nationwide improvements in geriatric mortality due to traumatic brain injury in Japan. *BMC Emerg Med* 2022;22:24.
- 26 Hume CH, Wright BJ, Kinsella GJ. Systematic review and meta-analysis of outcome after mild traumatic brain injury in older people. *J Int Neuropsychol Soc* 2022;28:736–55.
- 27 Heydari F, Golban M, Majidinejad S. Traumatic brain injury in older adults presenting to the emergency department: epidemiology, outcomes and risk factors predicting the prognosis. *Adv J Emerg Med* 2020;4:e19.
- 28 Czorlich P, Mader MM-D, Emami P, *et al*. Operative versus non-operative treatment of traumatic brain injuries in patients 80 years of age or older. *Neurosurg Rev* 2020;43:1305–14.
- 29 Rønning P, Helseth E, Skaansar O, *et al*. Impact of preinjury antithrombotic therapy on 30-day mortality in older patients hospitalized with traumatic brain injury (TBI). *Front Neurol* 2021;12:650695.
- 30 Suehiro E, Fujiyama Y, Kiyohira M, *et al*. Risk of deterioration of geriatric traumatic brain injury in patients treated with antithrombotic drugs. *World Neurosurg* 2019;127:e1221–7.
- 31 McIntyre A, Mehta S, Janzen S, *et al*. A meta-analysis of functional outcome among older adults with traumatic brain injury. *NeuroRehabilitation* 2013;32:409–14.
- 32 An KY, Monette MCE. Cognitive profiles of older adults with a prior traumatic brain injury versus healthy controls: a meta-analysis. *Brain Inj* 2018;32:832–42.
- 33 Santing JAL, Lee YX, van der Naalt J, *et al*. Mild traumatic brain injury in elderly patients receiving direct oral anticoagulants: a systematic review and meta-analysis. *J Neurotrauma* 2022;39:458–72.
- 34 McIntyre A, Mehta S, Aubut J, *et al*. Mortality among older adults after a traumatic brain injury: a meta-analysis. *Brain Inj* 2013;27:31–40.
- 35 Shamseer L, Moher D, Clarke M, *et al*. Preferred reporting items for systematic review and meta-analysis protocols (PRISMA-P) 2015: elaboration and explanation. *BMJ* 2015;350:g7647.
- 36 Sanderson S. New measures of population ageing. 2019. Available: [www.un.org/en/development/desa/population/events/pdf/expert/29/session1/EGM\\_25Feb2019\\_S1\\_SergeiScherbov.pdf](http://www.un.org/en/development/desa/population/events/pdf/expert/29/session1/EGM_25Feb2019_S1_SergeiScherbov.pdf)
- 37 WHO. Ageing and health. 2021. Available: [www.who.int/news-room/fact-sheets/detail/ageing-and-health](http://www.who.int/news-room/fact-sheets/detail/ageing-and-health)
- 38 Higgins JPT, Chandler J, Cumpston M, *et al*. *Cochrane handbook for systematic reviews of interventions version 6.3*. Cochrane, 2022.
- 39 Wells GA, Shea B, O'Connell D. n.d. The newcastle-ottawa scale (NOS) for assessing the quality of nonrandomised studies in meta-analyses.
- 40 Higgins JPT, Thompson SG. Quantifying heterogeneity in a meta-analysis. *Stat Med* 2002;21:1539–58.
- 41 Orsini N, Bellocco R, Greenland S. Generalized least squares for trend estimation of summarized dose–response data. *The Stata Journal* 2006;6:40–57.
- 42 Gardner RC, Dams-O'Connor K, Morrissey MR, *et al*. Geriatric traumatic brain injury: epidemiology, outcomes, knowledge gaps, and future directions. *J Neurotrauma* 2018;35:889–906.